



MASTER LEDtube InstantFit HF T8



MAS LEDtube HF 1200mm UO 16W840 T8

Philips MASTER LEDtube InstantFit T8 integrates a LED light source into a traditional fluorescent form factor. Its unique design creates a perfectly uniform visual appearance which cannot be distinguished from traditional fluorescent. Philips MASTER LEDtube InstantFit T8 is the ideal solution for customers who have higher light requirements and want to maximize value over lifetime. Full energy savings & longer lifetime result in attractive payback times and TCO benefits.

Warnings and Safety

- NOTES: The overall energy efficiency and light distribution of any installation that uses these lamps are determined by the design of the installation.

Product data

General Information		Color rendering index (CRI)	
Cap-Base	G13 ROT		80
Nominal lifetime	75,000 hour(s)	LLMF At End Of Nominal Lifetime (Nom)	70 %
Switching Cycle	50,000	Photobiological safety according to EN 62471	RG0
Lighting Technology	LED	Operating and Electrical	
Flux measurement reference	Sphere	Line Frequency	20000-75000 Hz
Light Technical		Input Frequency	20000-75000 Hz
Color Code	840 [CCT of 4000K]	Power Consumption	16 W
Beam Angle (Nom)	160 degree(s)	Lamp Current (Max)	750 mA
Luminous Flux	2,500 lm	Lamp Current (Min)	300 mA
Color Designation	Cool White (CW)	Starting Time (Nom)	0.5 s
Correlated Color Temperature (Nom)	4000 K	Warm-up time to 60% light	0.5 s
Luminous Efficacy (rated) (Nom)	156 lm/W	Power Factor (Fraction)	0.9
Color Consistency	<6	Voltage (Nom)	30-80 V
		LED alternative to fluorescent lamp power	36 W

MASTER LEDtube InstantFit HF T8

Inrush current at mains	-
Max. lamp no. on MCB B type 10A - Mains	-
Max. lamp no. on MCB B type 10A – EM ballast without Compensation Capacitor.	-
Max. lamp no. on MCB B type 10A – EM ballast with Compensation Capacitor.	-
Max. lamp no. on MCB B type 16A - Mains	-
Max. lamp no. on MCB B type 16A – EM ballast without Compensation Capacitor.	-
Max. lamp no. on MCB B type 16A – EM ballast with Compensation Capacitor.	-
Ballast Compatibility	HF

Temperature

T-Case Maximum (Nom)	55 °C
----------------------	-------

Controls and Dimming

Dimmable	Yes - Check ballast compatibility
----------	-----------------------------------

Mechanical and Housing

Bulb Finish	Frosted
Bulb Material	Plastic
Product Length	1,200 mm
Bulb Shape	T8
Net Weight (Piece)	0.230 kg

Approval and Application

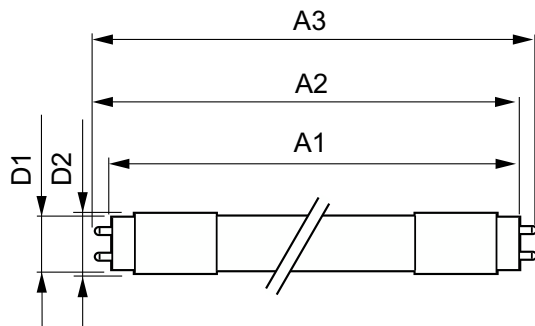
Energy Efficiency Class	D
-------------------------	---

Energy Saving Product	Yes
Approval Marks	RoHS compliance CE marking KEMA Keur certificate ENEC certificate
Energy Consumption kWh/1000 h	16 kWh
EPREL Registration Number	1165514
CE mark	Yes
EU RoHS compliant	Yes
Flickering value (PstLM) - Flickering value as per EN 61000-3-3	0.5
Stroboscopic effect visibility measure (SVM)	0.2
Ambient temperature range	-20 °C to 45 °C

Product Data

Order product name	MAS LEDtube HF 1200mm UO 16W840 T8
Full product name	MAS LEDtube HF 1200mm UO 16W840 T8
Full product code	871951446696800
Order code	929003554102
Material Nr. (12NC)	929003554102
Numerator - Quantity Per Pack	1
EAN/UPC - Product/Case	8719514466968
Numerator - Packs per outer box	20
EAN/UPC - Case	8719514466975

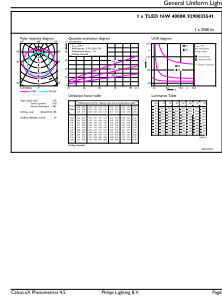
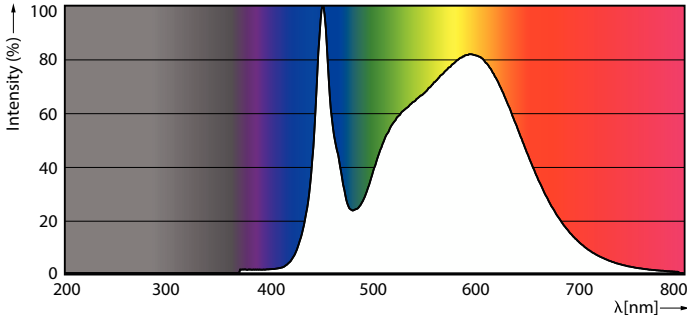
Dimensional drawing



Product	D1	D2	A1	A2	A3
MAS LEDtube HF 1200mm UO 16W840 T8	25.8 mm	28 mm	1,198.2 mm	1,205.3 mm	1,212.4 mm

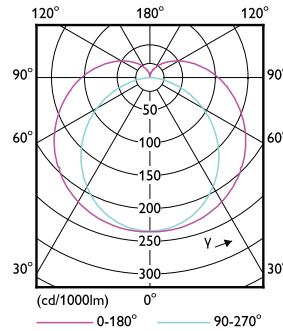
MASTER LEDtube InstantFit HF T8

Photometric data



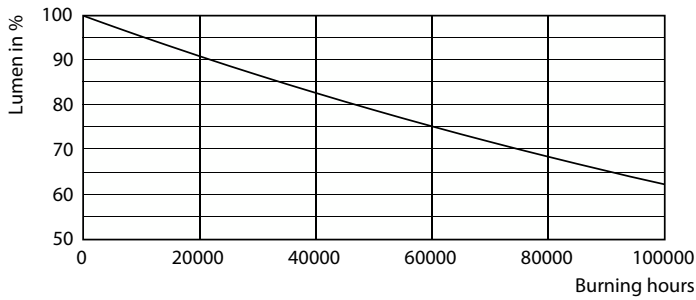
Spectral Power Distribution Colour - MAS LEDtube HF 1200mm UO 16W840 T8

General uniform lighting - MAS LEDtube HF 1200mm UO 16W840 T8

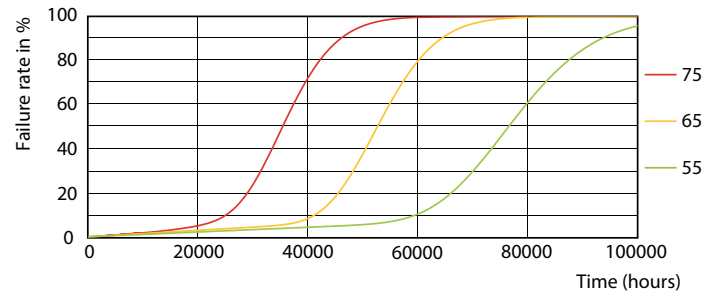


Light Distribution Diagram - MAS LEDtube HF 1200mm UO 16W840 T8

Lifetime



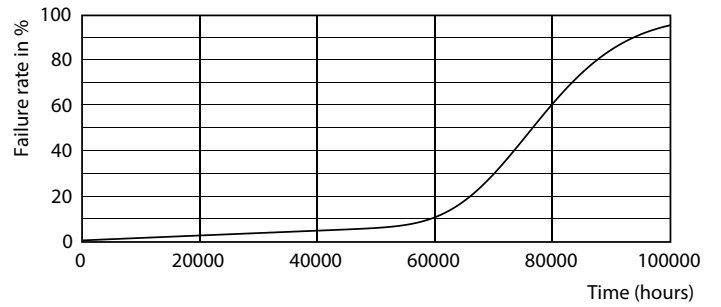
Lumen Maintenance Diagram - MAS LEDtube HF 1200mm UO 16W840 T8



LEDtube-75K-5575-FailureRate-LED

MASTER LEDtube InstantFit HF T8

Lifetime



Lumen Maintenance Diagram - MAS LEDtube HF 1200mm UO 16W840 T8

Life Expectancy Diagram



LifetimeVsTc

