



MASTER LED tube Mains T5



MAS LEDtube 600mm HE 7W 830 T5 EU

LED, T5, Mains, 600 mm, 7 W, 14W TL5 HE, 3000 K, 1000 lm, CRI 80, 50000 hour(s)

The new Philips Master LEDtube Mains T5 brings simplicity to your lighting project. You don't need to pay attention to the driver technology anymore. Thanks to a unique design, Philips MASTER LEDtube Mains T5 installs in luminaires operating on mains power connection. So simple to operate! . Perfectly safe, reliable & easy to install Philips MASTER LEDtube Mains T5 is the ideal alternative to standard fluorescent tubes to maximize value over lifetime with high energy saving and lower maintenance costs.

Product data

General Information		Luminous Efficacy (rated) (Nom)	
Cap-Base	G5		142 lm/W
Nominal lifetime	50,000 hour(s)	Color Consistency	<6
Switching Cycle	200,000	Color rendering index (CRI)	80
Lighting Technology	LED	LLMF At End Of Nominal Lifetime (Nom)	70 %
Flux measurement reference	Sphere	Photobiological safety according to EN 62471	RG0
Warranty period	5 years		
Light Technical		Operating and Electrical	
Color Code	830 [CCT of 3000K]	Input Frequency	50 to 60 Hz
Beam Angle (Nom)	200 degree(s)	Power Consumption	7 W
Luminous Flux	1,000 lm	Lamp Current (Nom)	32 mA
Color Designation	White (WH)	Starting Time (Nom)	0.5 s
Correlated Color Temperature (Nom)	3000 K	Warm-up time to 60% light	0.5 s
		Power Factor (Fraction)	0.9
		Voltage (Nom)	220-240 V

MASTER LED tube Mains T5

LED alternative to fluorescent lamp power	14W TL5 HE
Inrush current at mains	4.5
Max. lamp no. on MCB B type 10A – Mains	160
Max. lamp no. on MCB B type 10A – EM ballast without Compensation Capacitor.	-
Max. lamp no. on MCB B type 10A – EM ballast with Compensation Capacitor.	-
Max. lamp no. on MCB B type 16A – Mains	254
Max. lamp no. on MCB B type 16A – EM ballast without Compensation Capacitor.	-
Max. lamp no. on MCB B type 16A – EM ballast with Compensation Capacitor.	-
Ballast Compatibility	Mains

Temperature

T-Case Maximum (Nom)	50 °C
----------------------	-------

Controls and Dimming

Dimmable	No
----------	----

Mechanical and Housing

Bulb Finish	Frosted
Bulb Material	Glass
Product Length	600 mm
Bulb Shape	T5
Net Weight (Piece)	0.070 kg

Approval and Application

Energy Efficiency Class	D
-------------------------	---

Energy Saving Product	Yes
Approval Marks	RoHS compliance KEMA Keur certificate
Energy Consumption kWh/1000 h	7 kWh
EPREL Registration Number	1826568
CE mark	Yes
EU RoHS compliant	Yes
Flickering value (PstLM) – Flickering value as per EN 61000-3-3	1
Stroboscopic effect visibility measure (SVM)	0.4
Ambient temperature range	-20 to +45 °C

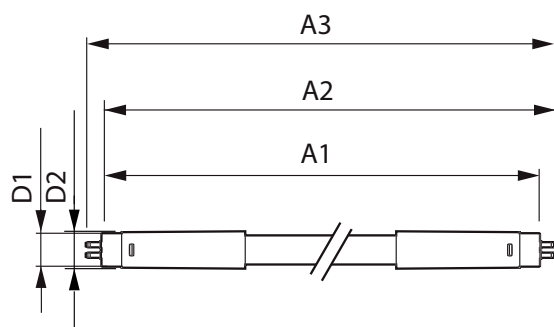
Application Conditions

can it be used in closed luminaires	Yes
-------------------------------------	-----

Product Data

Order product name	MAS LEDtube 600mm HE 7W 830 T5 EU
Full product name	MAS LEDtube 600mm HE 7W 830 T5 EU
Full product code	872016931169500
Order code	929003795402
Material Nr. (12NC)	929003795402
Numerator - Quantity Per Pack	1
EAN/UPC - Product/Case	8720169311695
Numerator - Packs per outer box	10
EAN/UPC - Case	8720169311701

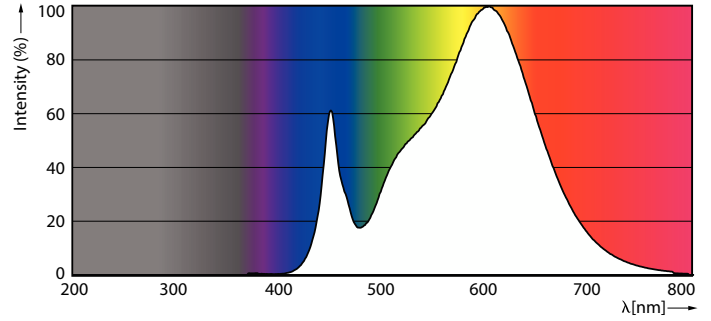
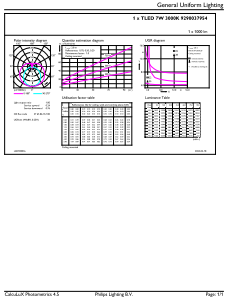
Dimensional drawing



Product	D1	D2	A1	A2	A3
MAS LEDtube 600mm HE 7W 830 T5 EU	15.7 mm	19 mm	549 mm	556.1 mm	563.2 mm

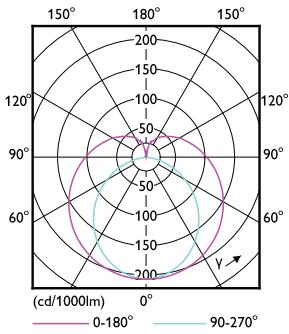
MASTER LED tube Mains T5

Photometric data



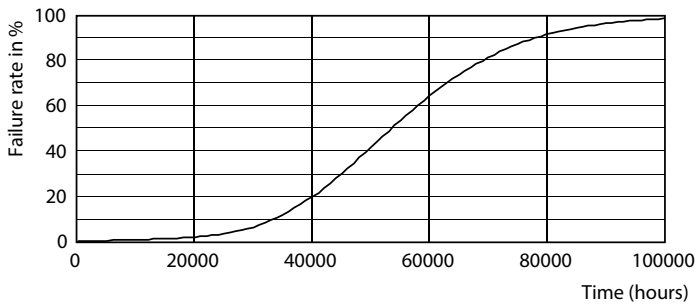
General uniform lighting - MAS LEDtube 600mm HE 7W 830 T5 EU

Spectral Power Distribution Colour - MAS LEDtube 600mm HE 7W 830 T5 EU

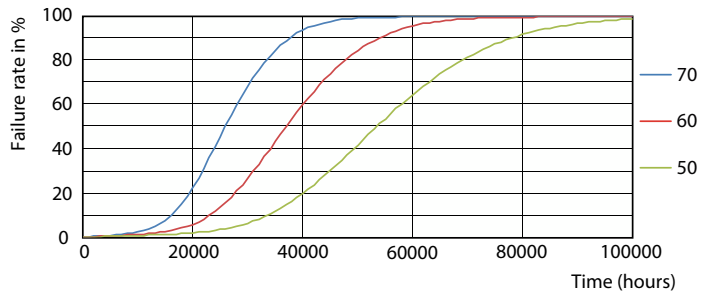


Light Distribution Diagram - MAS LEDtube 600mm HE 7W 830 T5 EU

Lifetime



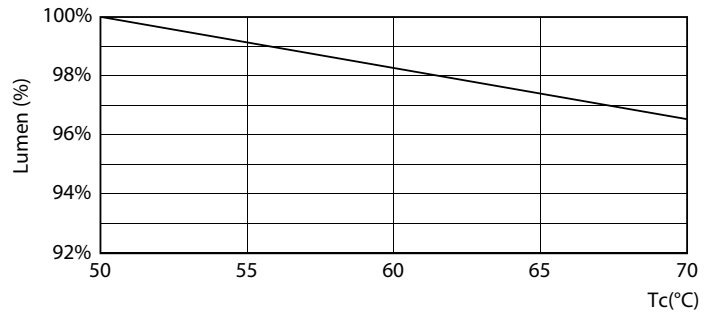
Life Expectancy Diagram



FailureRate

MASTER LED tube Mains T5

Lifetime



LifetimeVsTc

Lumen Maintenance Diagram - MAS LEDtube 600mm HE 7W 830 T5 EU



Lumen Maintenance Diagram - MAS LEDtube 600mm HE 7W 830 T5 EU

