

QUARTZ HALOGEN LAMPS • DOUBLE ENDED

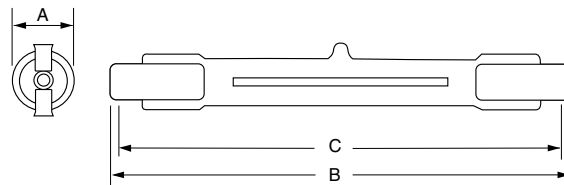
J

- Only for Use in Approved Enclosed Halogen Fixtures
- Recessed Single Contact
- Compact CC-8 & Linear C-8 Filaments
- Even, Linear Illumination
- T2.5 & T4



Watts (W)	Ordering Code	Lamp Description	Dimensions (mm)			Filament Type	Lumens (lm)	Avg Life (h)	Bulb Finish
			Dia (A)	MOL (B)	C-to-C (C)				
R7s-12 Base – MOL \approx 3 1/8" (80.3mm) – T2.5, T4*									
100	1000698	J120V-100W/79MM SHORT	8.0	80.3	74.9	CC-8	1450	1500	Clear
100	1000721	J130V-100W/79MM SHORT	8.0	80.3	74.9	CC-8	1450	1500	Clear
100	1000762	J240V-100W/79MM SHORT	8.0	80.3	74.9	CC-8	1250	1500	Clear
150	1001734	J12V-150WA/80*	12.0	85.5	80.0	C-8	2700	2000	Clear
150	1000701	J120V-150W/79MM SHORT	8.0	80.3	74.9	CC-8	2400	1500	Clear
150	1000723	J130V-150W/79MM SHORT	8.0	80.3	74.9	CC-8	2400	2000	Clear
150	1000751	J230V-150W/79MM SHORT	8.0	80.3	74.9	CC-8	1950	1500	Clear
200	1000703	J120V-200W/79MM SHORT	8.0	80.3	74.9	CC-8	3460	2000	Clear
250	1000707	J120V-250W/79MM SHORT	8.0	80.3	74.9	CC-8	4500	2000	Clear
300	1000709	J120V-300W/79MM SHORT	8.0	80.3	74.9	CC-8	5900	2000	Clear

With greater economy through long life and high output, J series of lamps are ideal for flood lighting wide areas for both indoor and outdoor lighting installations.



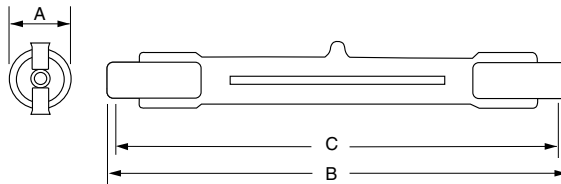
R7s-12

J

- Only for Use in Approved Enclosed Halogen Fixtures
- Recessed Single Contact Base - R7s-12
- Compact CC-8 & Linear C-8 Filaments
- T2.5 & T4



Watts (W)	Ordering Code	Lamp Description	Dimensions (mm)			Filament Type	Lumens (lm)	Color Temp (K)	Avg Life (h)	Bulb Finish	Case Qty
			Dia (A)	MOL (B)	C-to-C (C)						
R7s-12 Base – MOL ≈ 4-11/16" (119.6mm) – T 2.5											
100	1000697	J120V-100W/119MM LONG	8.0	119.6	114.2	C-8	1450	2750	1500	Clear	50
100	1000720	J130V-100W/119MM LONG	8.0	119.6	114.2	C-8	1450	2750	1500	Clear	50
150	1000719	J12V-150WG/119MM LONG	8.0	119.6	114.2	C-8	2400	2900	1500	Clear	50
150	1000700	J120V-150W/119MM LONG	8.0	119.6	114.2	C-8	2400	2800	1500	Clear	50
150	1000722	J130V-150W/119MM LONG	8.0	119.6	114.2	C-8	2400	2850	1500	Clear	50
200	1000702	J120V-200W/119MM LONG	8.0	119.6	114.2	C-8	2850	2900	2000	Clear	50
300	1000291	EHM, J120V-300W	8.0	119.6	114.2	C-8	5900	3000	2000	Clear	50
300	1000296	EHZ, J120V-300WF	8.0	119.6	114.2	C-8	5770	3000	2000	Frosted	50
300	1000726	J130V-300W/119MM LONG	8.0	119.6	114.2	C-8	5900	—	2000	Clear	50
500	1000488	FCL, J120V-500W	8.0	119.6	114.2	C-8	10000	3000	2000	Clear	50
500	1000497	FCZ, J120V-500WF	8.0	119.6	114.2	C-8	10700	3000	2000	Frosted	50
500	1000224	DVS, J130V-500WB	8.0	119.6	114.2	C-8	10500	3000	2000	Clear	50
500	1000736	J220V-500WE/119MM LONG	12.0	119.6	114.2	C-8	9500	3000	2000	Clear	50
500	1000077	BSH, J240V-500WN	10.0	119.6	114.2	C-8	9500	2950	2000	Clear	50
750	1000738	J220V-750WB1	12.0	119.6	114.2	C-8	16100	3050	1500	Clear	50
R7s-12 Base – MOL ≈ 7-1/2" (191.1mm) – T 2.5, T4*											
1000	1000695	J120V-1000WB*	12.0	191.1	185.7	C-8	22000	3000	2000	Clear	100
R7s-12 Base – MOL ≈ 10-5/64" (256.1mm) – T 2.5											
1500	1000243	DYD, J240V-1500WB	8.0	256.1	250.7	C-8	33000	3050	2000	Clear	100



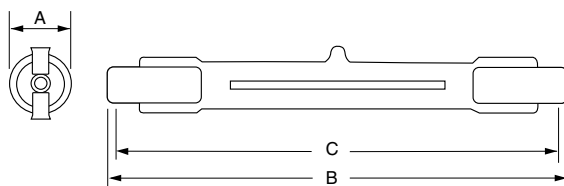
R7s-12

QUARTZ HALOGEN LAMPS • DOUBLE ENDED

JP

- Only for Use in Approved Enclosed Halogen Fixtures
- Recessed Single Contact Base - R7s*, R7s-12
- Operate Horizontal $\pm 4^\circ$
- T2.5, T3 & T4

Watts (W)	Ordering Code	Lamp Description	Dimensions (mm)			Filament Type	Lumens (lm)	Color Temp (K)	Avg Life (h)	Bulb Finish	Case Qty
			Dia (A)	MOL (B)	C-to-C (C)						
MOL \approx 4-11/16" (119.6mm) – R7s-12, R7s* Base											
500	1000502	FDN, JP120V-500WCF6	12.0	119.6	114.2	C-8	12500	3200	400	Frosted	50
500	1000500	FDL, JP120V-500WC6	12.0	119.6	114.2	C-8	13250	3200	400	Clear	50
500	1001084	JP220V-500WC*	12.0	119.6	114.2	C-8	12500	3200	200	Clear	10
750	1000327	EMD, JP120V-750WCF	12.0	119.6	114.2	C-8	19500	3200	400	Frosted	50
750	1000299	EJG, JP120V-750WC	12.0	119.6	114.2	C-8	20600	3200	400	Clear	50
800	1000329	EMF, JP240V-800WCF	12.0	119.6	114.2	C-8	21400	3200	250	Frosted	50
800	1000328	EME, JP240V-800WC1UA	12.0	119.6	114.2	C-8	22000	3200	250	Clear	50
1000	1000489	FCM, JP120V-1000WC1	12.0	119.6	114.2	C-8	27000	3200	300	Clear	50
1000	1000533	FHM, JP120V-1000WCF1	12.0	119.6	114.2	C-8	26000	3200	300	Frosted	50
1000	1000298	EJD, JP185V-1000WS*	12.0	119.6	114.2	C-8	33600	3350	100	Clear	50
MOL \approx 5-5/16" (135.2mm) – R7s-12 Base											
500	1000652	GDA, JP120V-500WC2	12.0	135.2	129.8	C-8	11000	3100	100	Clear	50
500	1000654	GDA/240V, JP245V-500WC	12.0	135.2	129.8	C-8	11000	3150	100	Clear	50
MOL \approx 6-19/32" (167.4mm) – R7s-12 Base											
1000	1000523	FFT, JP120V-1000WC2	12.0	167.4	163.3	C-8	27000	3200	300	Clear	100
1500	1000529	FGT, JP120V-1500WCF	13.0	167.4	162.0	C-8	40200	3200	400	Frosted	100
1500	1000499	FDB, JP120V-1500WC	13.0	167.4	162.0	C-8	41200	3200	400	Clear	100
MOL \approx 6-21/32" (169.3mm) – R7s-12 Base											
2000	1000524	FFW, JP120V-2000WC	14.0	169.3	163.9	C-8	57000	3200	125	Clear	100
MOL \approx 7-9/16" (191.1mm) – R7s* Base											
1000	1000310	EKM, JP225V-1000WCL*	12.0	191.1	140.0	C-8	25000	3200	200	Clear	100
1250	1001086	JP225V-1250WC1*	12.0	191.1	185.7	C-8	33500	3200	200	Clear	100



R7s-12

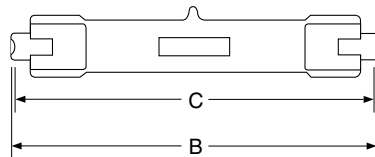
QUARTZ HALOGEN LAMPS • DOUBLE ENDED

JPD

- Only for Use in Approved Enclosed Halogen Fixtures
- Recessed Single Contact Base - R7s-18 & RX7s
- Universal Burn Position



Watts (W)	Ordering Code	Lamp Description	Dimensions (mm)			Filament Type	Lumens (lm)	Color Temp (K)	Avg Life (h)	Bulb Finish	Case Qty
			Dia (A)	MOL (B)	C-to-C (C)						
Recessed Single Contact Base – R7s-18, RX7s*											
150	1001106	JPD25V-150WG1 fused	15.0	66.7	64.7	CC-8	2700	2900	3000	Clear	20
300	1000292	EHP, JPD120V-300WG	15.0	80.3	74.9	CC-8	5650	2900	2000	Clear	50
375	1000230	DWZ, JPD30V-375W	15.0	80.3	74.9	CC-8	7500	3000	1000	Clear	50
400	1000293	EHR, JPD120V-400WG	15.0	80.3	74.9	CC-8	7750	2900	2000	Clear	50
400	1000498	FDA, JPD120V-400W	15.0	80.3	74.9	CC-8	10400	3200	200	Clear	50
420	1000472	FAL, JPD120V-420WC	14.0	66.7	62.0	CC-8	11000	3200	75	Clear	50
420	1000518	FFM, JPD120V-420WC1	15.0	80.3	74.9	CC-8	11000	3200	75	Clear	50
600	1000486	FCB, JPD120V-600WD	15.0	95.0	89.6	CC-8	17000	3250	75	Clear	50
600	1000508	FEA, JPD240V-600WC	15.0	95.0	89.6	CC-8	15000	3200	75	Clear	50
650	1000471	FAD, JPD120V-650WC	15.0	80.3	74.9	CC-8	16500	3200	100	Clear	50
650	1000482	FBX, JPD120V-650WCF	15.0	80.3	74.9	CC-8	16000	3200	100	Frosted	50
650	1000485	FCA, JPD120V-650WSF	15.0	80.3	74.9	CC-8	19000	3400	35	Frosted	50
650	1000229	DWY/FAB, JPD120V-650WS	15.0	80.3	74.9	CC-8	20000	3400	25	Clear	50
650	1001103	JPD220V-650WC	15.0	80.3	74.9	CC-8	16300	3200	75	Clear	50
800	1000238	DXX/220V, JPD220V-800WC1	15.0	80.3	74.9	CC-8	20500	3200	75	Clear	50
800	1000240	DXX/240V, JPD240V-800WC	15.0	80.3	74.9	CC-8	20500	3200	75	Clear	50
1000	1000236	DXW, JPD120V-1000WC5	18.0	95.0	89.6	CC-8	28000	3200	150	Clear	50
1000	1000234	DXN, JPD120V-1000WS1	18.0	95.0	89.6	CC-8	31000	3400	50	Clear	50
1000	1000511	FER, JPD120V-1000WC6*	19.0	143.5	138.1	CC-8	27500	3200	500	Clear	50
1000	1000228	DWT, JPD120V-1000WB1*	19.0	143.5	138.1	CC-8	23400	3000	2000	Clear	50
1000	1000241	DYA, JPD120V-1000WC2	18.0	109.5	104.1	CC-8	28000	3200	200	Clear	50
1000	1000483	FBY, JPD120V-1000WC5F	18.0	95.0	89.6	CC-8	26000	3200	150	Frosted	50
1000	1001102	JPD220V-1000WC	18.0	95.0	89.6	CC-8	25000	3200	120	Clear	50
2000	1000516	FEY, JPD120V-2000WC	29.0	143.5	138.1	CC-8	57000	3200	400	Clear	50
2000	1000515	FEX/240V, JCD240V-2000WC1	29.0	143.5	138.1	CC-8	50000	3200	300	Clear	50



R7s-18

